



Master in Fine Art (Theatre Directing) Course Book

2022-2023



Trinity College Dublin
The University of Dublin

Contents

1. INTRODUCTION.....	9
2. MASTER IN FINE ART (THEATRE DIRECTING).....	15
2.1 MFA Timetable	15
2.3 Reading Weeks	16
2.4 Professional Placements.....	16
2.5 Graduate Productions.....	17
3. THE CURRICULUM.....	18
3.1 MODULE 1: CONTEMPORARY THEATRE PRACTICE	19
3.2 MODULE 2: DRAMATURGY FOR THEATRE DIRECTING	20
3.3 MODULE 3: THEATRE SKILLS.....	21
3.4 MODULE 4: DIRECTING WORKSHOP	22
3.5 MODULE 5: THEATRE PRODUCTION.....	23
4. STRATEGIES FOR MONITORING STUDENT PROGRESS.....	25
4.1 Student Progress Meetings	25
4.2 Tutorials/Feedback.....	25
4.3 Student Journals	25
4.4 Oral Examinations.....	25
4.5 Assessment.....	25
5. ECTS	26
6. GRADES.....	26
6.1 Grades and Assessments	26
6.2 Weighting.....	28
6.3 Overall Assessment and Progression.....	28
6.4 : Awarding of Degrees:	29
6.5 Late Submission, non-submission and Penalties.....	29
6.6 Extensions and Extenuating Circumstances	30
7. STYLE REQUIREMENTS FOR WRITTEN SUBMISSIONS.....	31
7.1 Style Requirements:.....	31
7.2 Acknowledgements and Footnotes:.....	31
7.3 Trinity Policy on Plagiarism:.....	32

8. HOW TO SUBMIT WRITTEN WORK	35
9. IMPORTANT SAFETY ISSUES FOR STUDENTS	36
9.1 Security	36
9.2 Fire Safety Procedures:.....	36
9.3 Working with Equipment.....	36
9.4 Health and Safety	37
9.5 Housekeeping	37
10. DATA PROTECTION	37
11. CODES OF PRACTICE	38
11.1 Punctuality and Attendance	38
11.2 Illness or Other Absence	38
11.3 Student Housekeeping	38
11.4 General Upkeep of Rehearsal Rooms, Studios and all Classroom Spaces.....	38
11.5 Personal Property and Storage:.....	39
11.6 Lost Property	40
11.8 Green Room and Café/Front Foyer	41
11.9 Resource Room.....	41
11.10 Booking rehearsal space	42
11.11 Wardrobe and Costume Guidelines.....	42
11.12 Props Store Guidelines.....	42
11.13 Professional Courtesy	43
11.14 Scripts and Photocopying	43
11.15 Mobile Phones/Social Networking/Recording Devices	43
11.16 Food and Drink.....	43
11.17 Cloakrooms and Lockers	44
11.18 Press and Publicity	44
11.19 No Smoking Policy.....	44
11.20 Alcohol or Drug Abuse	44
11.21 Dignity & Respect.....	44
11.22 Disruptive or Violent Behaviour.....	45
11.23 Sexual, Gender or Racial Harassment.....	45
11.24 Gender Equality.....	45

11.25	Maintaining Good Health.....	45
12.	APPENDICES.....	47
12.1	Permission to disclose personal information form (MFATD).....	47
12.2	Permission to disclose health information form	48
12.3	Written Work Submission Form	49
	Building Maps	50

Covid-19 protocols and safety regulations in 2022/23

This section outlines essential information on The Lir's strategy to deliver our courses in 2022/23 academic year safely, efficiently and to the highest educational standards.

The Lir Academy is dedicated to the safety of our staff and students. All staff and students will be made fully aware the Lir's safety protocols during their induction. Details of the full range of Covid 19 safety measures that remain in place for the 2022/23 academic year can be found in The Lir's Resumption of Activity Masterplan which is available on our website or from [this link](#). This Masterplan must be read, in its entirety, by all students before commencing their course.

Students should be aware that further changes to the delivery of modules may be necessary in the context of a future deterioration of the COVID 19 public health situation. Such changes may necessitate validated contact hours being reduced, course components offered either via blended learning (a mix of online/onsite delivery) or components may be delivered via 100% online tuition where it is clear that the learning outcomes and assessments can still be facilitated in 2022/23.

The Lir may also need to introduce adjustments to our planned showcases, performances, placements and assessments at short notice.

Where changes and adjustments are needed, The Lir will keep students informed via their student emails as soon as is feasible.

1. INTRODUCTION

The Lir is the National Academy of Dramatic Art at Trinity College Dublin. Its aim is to train young actors, designers, directors, playwrights, stage managers and theatre technicians to the highest international standards for careers in the theatre and allied professions. The Lir opened its doors in 2011 and we now deliver six full-time programmes: the Foundation Diploma in Acting and Theatre, Bachelor in Acting (Hons), Bachelor in Stage Management and Technical Theatre (Hons), MFA Playwriting, MFA Stage Design, MFA Theatre Directing. Alongside which we also offer a host of short courses and other activities and events throughout the year. In 2022/23 we welcome a student body of 142 students from all over the world.

This handbook is intended to give the necessary information about the Master in Fine Art (Theatre Directing). The official regulations for the course are printed in the University Calendar and have primacy over the information in this handbook, which sets out the detailed implementation of those regulations by The Lir. The information in the introductory section is designed primarily for students new to The Lir. The rest of the handbook gives an account of the requirements for participation in the MFA, so it is essential that students should consult it throughout the year. It is each student's responsibility to become familiar with the requirements listed in this handbook.

The Master in Fine Art (Theatre Directing) runs concurrently with the Master in Fine Art (Stage Design) and Master in Fine Art (Playwriting). With a view to engendering a sense of ensemble between the students, the programmes are designed to overlap and interact, with students on all three strands of the MFA sharing some classes and working together on projects where possible.

1.1 Lir Staff

Director: Loughlin Deegan

Academic Director: Professor Brian Singleton (Samuel Beckett Chair of Drama & Theatre)

Director of Administration: Anne Fitzpatrick

Academic Administrator: Colm Carney

Admissions and Short Course Manager: Tara McDermott

Receptionist: Cristina Floroiu

Finance Officer: Sara Scally

Director of Marketing: Jessica Hillard

Acting Director of Marketing: Melanie Wright

Marketing Assistant: Ciarán Gallagher

Director of Development: Joanne O'Hagan

Foundation Diploma and Short Courses Director: Gavin O'Donoghue

Commercial Director: Paul O'Connor

Training Coordinator: Katie Sweeney

Director of Technical Training: Barry Conway

Production Manager: Des Kenny

Construction Manager and Technical Stage Manager: Jason Coogans

Head of Stage Management: Aisling Mooney

Head of Lighting: Eve D'Alton

Head of Costume: Clodagh Deegan

Head of Scenic: Jason McCaffery

Head of Sound: Ivan Birthistle

Master in Fine Art (Theatre Directing) Teaching Staff:

Head of MFA in Theatre Directing: Annabelle Comyn

Directing Workshop: Annabelle Comyn, & Louise Lowe

Contemporary Theatre Practice: Thomas Conway

Dramaturgy: Karin McCully

Movement: Sue Mythen

Sound: Denis Clohessy

Contacting a member of staff:

All staff can be contacted using the following email format: firstname.lastname@thelir.ie unless otherwise arranged with a member of staff.

We recommend that you email staff to arrange an appointment during their office hours. This is also a useful way of contacting a teacher for a small query if a meeting is not required. Please do not disturb staff outside their office hours unless you have previously arranged a meeting with them.

1.2 Administration

The administrative office of The Lir is located on the first floor of the building. The Academic Administrator is available to answer questions and provide information every weekday from 9.00am-10.00am and from 12.30pm-2.00pm.

PLEASE NOTE THAT THIS OFFICE IS NOT NORMALLY OPEN FOR STUDENT ENQUIRIES OUTSIDE THESE HOURS WITH THE EXCEPTION OF REPORTING ACCIDENTS AND EMERGENCIES, WHICH SHOULD BE DONE STRAIGHT AWAY

1.3 Contact Information

It is essential that the administrative office has an up-to-date address and phone number for all students. Students should notify the office immediately of any change of contact details. The Academic Administrator and your teachers will often communicate with you via your @tcd.ie email address, so please check your email on a regular basis.

1.4 Notice Boards

The main MFA (Theatre Directing) notice board is located in the Green Room. MFA students are asked to check this notice board regularly for any notices and/or changes to the timetable.

1.5 Student Support and Guidance

Although The Lir staff is always available to lend a sensitive and supportive ear with regard to any questions, problems, or concerns, there may be some situations for which a student does not feel comfortable approaching these staff members. If necessary, students can consult Professor Brian Singleton, Academic Director of The Lir, who will be able to give confidential advice on matters relating to the course and the workings of the university.

Professor Singleton's contact details are: Email: bsnglton@tcd.ie - Tel: +353 1 896 1550

Trinity's Postgraduate Advisory Service, as outlined below, also provides advice to all postgraduate students.

1.6 Student Learning Development

Student Learning Development are here to help you achieve your academic potential while studying in Trinity. They provide workshops and events on a range of academic skills through

the year, e.g. self-management skills, study and exam skills, presentations, writing and critical thinking. In addition they also see students on a one-to-one basis for more specific queries by appointment or at our drop-in clinics.

Contactable via <http://student-learning.tcd.ie/>

1.7 Student learning difficulties

Students with learning difficulties can access support via <https://www.tcd.ie/disability/>

As dyslexia is often present within the student body 'Read & Write 11' has been added to the resource computers. Please note that this software is still being rolled out across the whole academy, any machines which do not have this software please notify facilities@thelir.ie

1.8 Student Resource Room

All students of The Lir will have access to full services of Trinity's library. Additional reference materials and books will be acquired over the course of the year for the Student Resource Room at The Lir. Books should be read in the resource room, and should not leave The Lir.

Students may also be required to buy copies of certain texts for classes and/or seminars as they will not be able to depend on the library or resource room for such texts. Further information about reading lists for each class is available from the beginning of each term from individual teachers. Drama and theatre related books are mostly located on the first floor of the Ussher Library, but students will also need to use other parts of the library. The main catalogues are in the Berkeley Library, and the TCD library computer catalogue is available in every library and from the computers in the Student Resource Room at The Lir.

NOTE: Books received before about 1960 are not in the computer catalogue; they must be sought in the folio volumes catalogue in Iveagh Hall of the Berkeley Library.

1.9 Student Representation

Each MFA year group elects a student representative, one of whom is entitled to represent the MFA students at meetings of the Master in Fine Art (Theatre Directing) Committee. This committee decides on issues such as academic courses, assessment and examining etc., and meets once per year.

Each year group representative will have the opportunity to raise concerns or issues of the course at the committee meeting.

1.10 Student Counselling Services

Confidential help with personal problems is available for all students through Trinity's Student

Counselling Services which are located at 9 South Leinster Street just a 15minute walk from The Lir campus. For the 2022/23 academic year, one on one appointments will also be available in the main Lir building on Tuesday and Wednesday evenings. Appointments may be made by contacting their office via telephone on 01 896 1407 or by emailing student-counselling@tcd.ie.

Further information about the services available can be found at:
www.tcd.ie/Student_Counselling

1.11 Postgraduate Advisory Service

The Postgraduate Advisory Service is a unique and confidential service available to all registered postgraduate students in Trinity College. It offers a comprehensive range of academic, pastoral and professional supports dedicated to enhancing your student experience.

Who?

The Postgraduate Advisory Service is led by the Postgraduate Support Officer who provides frontline support for all Postgraduate students in Trinity. The Postgrad Support Officer will act as your first point of contact and a source of support and guidance regardless of what stage of your Postgrad you're at. In addition, each Faculty has three members of Academic staff appointed as Postgraduate Advisors who you can be referred to by the Postgrad Support Officer for extra assistance if needed.

Contact details of the Postgrad Support Officer and the Advisory Panel are available on our website: http://www.tcd.ie/Senior_Tutor/postgraduate/

Where?

The PAS is located on the second floor of House 27. It's open from 8.30 – 4.30, Monday to Friday. Appointments are available from 9am to 4pm.

Phone: 01 896 1417 Email: pgsupp@tcd.ie

What?

The PAS exists to ensure that all Postgrad students have a contact point who they can turn to for support and information on college services and academic issues arising. Representation assistance to Postgrad students is offered in the area of discipline and/ or academic appeals arising out of examinations or thesis submissions, supervisory issues, general information on Postgrad student life and many others. If in doubt, get in touch! All queries will be treated with confidentiality. For more information on what it offers see the website.

If students have any queries regarding your experiences as a Postgraduate Student in Trinity don't hesitate to get in touch.

1.12 Course Materials and Other Costs

Although some texts, notes and handouts will be provided by The Lir, and much of the prescribed reading is available from Trinity's library, we advise students to allocate themselves a yearly script budget in order to buy scripts to build up their own Library for professional work. Many of the prescribed plays for the Dramaturgy module are bought in bulk and available from the Academic Administrator at a discounted rate.

Students should also familiarise themselves with the Drama Online database (www.dramaonlinelibrary.com) which is accessible by all Trinity students. Students should access this online library through Trinity library's onlineportal.

As part fulfilment of the Contemporary Theatre Practice module, students are expected to attend or view up to six nominated theatre performances per term. Student discounts are usually available when booking, however students should budget up to €300 over the course of the year to cover the cost of these tickets.

2. MASTER IN FINE ART (THEATRE DIRECTING)

The Master in Fine Art (Theatre Directing) is a vocational degree. It requires enormous personal commitment and dedication. Great emphasis is placed on group learning and shared endeavour. The course also requires sustained effort and individual responsibility for development in all subject areas.

2.1 MFA Timetable

The one-year full-time Master in Fine Art (Theatre Directing) Degree is taught over three terms. Students taking the course part-time will complete the programme over two years. The first two terms are of twelve weeks' duration. The final module will be taught in the third semester and subsequent summer months (for full-time students) or in the second year of the course (for part-time students). The final module will be taught by an on-going series of individual tutorials. Students who elect to take the course part-time ordinarily complete Modules 2 & 3 in year one and Modules 1 & 4 in year two.

Classes in the first two terms will normally take place between 18:00-21:00 on Mondays, 09.30-13.00 on Tuesdays; 14:00-17:00 on Wednesdays and 12:00-17:00 on Thursdays. Classes may need to reschedule in exceptional circumstances and students are expected to prioritise classes and make themselves available at the rescheduled time. In addition a number of skills classes will be scheduled throughout Terms One and Two at times to be confirmed in advance. Some aspects of the curriculum and other responsibilities will be scheduled in the evenings and exceptionally on weekends.

MFA students will be expected to attend selected theatre performances and screenings, usually on Wednesday evenings, throughout and will be encouraged to participate in shared activities with the Bachelor in Acting (Hons) programme.

Students will receive a copy of the timetable at the beginning of each term for weeks 1-6 and at half-term for weeks 8-12. All timetables are subject to change and students are expected to check the MFA notice board on a regular basis for any timetabling announcements.

2.2 Term Dates 2022/23

The Term Dates for 2022/2023 are as follows:

Term 1: Monday 26th September – Friday 16th December 2022

Term 2: Monday 9th January – Friday 31st March 2023

Term 3: Monday 24th April – Friday 14th July 2023

The Term Breaks are:

Saturday Dec 17th to Sunday Jan 8th 2022

Saturday April 1st to Sunday April 23rd 2023

The MFA (Theatre Directing) course is a 12 month year-long programme. Students should note however that, as outlined in 2.4 below, some placement opportunities may run slightly over this timeline. If this poses particular problems for individual students they should make their course co-ordinator aware of the situation as early as possible so that it can be factored into the planning of individual placements.

2.3 Reading Weeks

The seventh week of each term is designated as a Reading Week. During Reading Weeks, timetabled classes, workshops and seminars cease. This is to allow students time to complete the required reading for each class. Furthermore, it is likely during each term that a week's classes will be replaced by individual tutorials with MFA teachers. The timing of individual tutorials will be at the discretion of each teacher, and will be communicated at the beginning of each term.

2.4 Professional Placements

Directing students will complete two professional placements as part fulfilment of Module 5: Theatre Production as outlined below. One of these placements will involve assisting a professional director on one of The Lir's Bachelor in Acting Graduate Production. This placement may occur in either Term 3 of the 2022/23 academic year *or* Term 1 of the 2023/23 academic year.

The second placement will involve assisting a professional director on a professional production in Dublin. The dates for this placement will be agreed in consultation with the student as the production schedules of the hosting theatres are confirmed. Some of these placements are likely to be on Dublin Theatre Festival productions which may open as late as the end of September or the first week in October 2023. Students should bear this in mind

when budgeting for the year.

Given the nature of a director's work, students are expected to work full-time when on placement, attending all rehearsals, design and production meetings, technical rehearsals and previews. The students are also expected to be available at all other times to assist the professional director as required.

Students will be supported by ongoing contact with their directing tutor throughout both placements.

Placements will be assessed on the basis of a critical reflection to be completed by the student and by a formal review between the professional director and the directing tutor.

2.5 Graduate Productions

From the beginning of Term Three MFA (Theatre Directing) students will focus on placements and the 'Theatre Production' module. Full-time and returning part-time students will work towards a production showcase in July 2023; part-time students will present their work to the public in July 2024.

Students will work with the Lir's graduating acting students and colleagues from the MFA in Stage Design on a series of productions to be staged in the Lir's two performance studios at the end of the academic year as part of a season of work entitled *GradFest*. The productions will be fully supported by the Stage Management and Technical Theatre students and the technical and workshop staff of The Lir. The Directing students will also be supported throughout this process by their directing tutor. Full details of the production process will follow in Week Six of Term One.

Showcase productions will be assessed by the directing tutor and the Director of The Lir (or their agreed deputies) as outlined in Section 3.5 below, and the assessment process will be overseen by an External Examiner.

Outline Production dates:

26/06/2023	Week 10	Gradfest Week 1
03/07/2023	Week 11	Gradfest Week 2
10/07/2023	Week 12	Gradfest Week 3

3. THE CURRICULUM

The directing strand of the MFA aims to equip students of exceptional talent with the skills necessary to pursue a career in the professional theatre and related industries through the development of skills, professional practices and creative approaches to theatre directing.

It encourages a self-reflexive approach to learning with a view to developing independently thinking practitioners of theatre. Through a series of skills-based directing workshops and tutorials with professional directors and dramaturges; the individual voice of the student director will be nurtured and developed. Classes in dramaturgy and contemporary theatre practice will supplement the training and placements alongside two professional theatre directors will form a key component of the programme. The course will culminate in the staging of a production that will benefit from one-on-one mentoring by a professional director.

Students must take four modules to complete the course. Modules 1, 4 and 5 are compulsory modules and students must choose between two elective modules; Module 2 and Module 3.

All modules are subject to staff availability and student demand. Please note that Module 3, Theatre Skills, will not be offered as a full Module in 2022/2023. It will be replaced by a series of skills classes throughout the year and informal training opportunities when available.

In addition to the core classes and workshops, individual tuition from professional directors will be a key feature of the training. Students elect to take this course either part-time (24 months) or full-time (12 months). Students who elect to take the course part-time ordinarily complete Modules 1 & 2 in year one and Modules 4 & 5 in year two.

3.1 MODULE 1: CONTEMPORARY THEATRE PRACTICE

Module Code: LR7001

Module Coordinator: Loughlin Deegan

Teaching staff: Thomas Conway

Term: 1 & 2

Average Teaching Hours: 3 hours per week

Aims:

This module will be taught over 2 terms (Terms One and Two) and will introduce students to a range of contemporary theatre practices. It will see students engage with contemporary plays and recordings of performances, theatre artists of international standing, and interpretative frameworks that facilitate deeper analysis of the plays and performances.

The principal aim of the course is to enable students to become conversant in the practices, processes, forms, theories and debating points that constitute the making and reception of contemporary theatre. The module is taken by all MFA students including playwrights, designers and directors. Students encounter learning opportunities on multiple fronts. They identify the principal approaches, including theatre adaptations, documentary theatre, postdramatic theatre, dance theatre and developments in contemporary playwriting. They analyse the formal, aesthetic, political and ethical dimensions to contemporary theatre practices as they relate to such issues as queerness, disability, racial and ethnic diversity, and feminism. They encounter live performance in Dublin and contextualize these productions with reference to Irish and international theatre history. They meet the artists responsible for the productions attended and ask questions about their working methods. They study the various production methods and rehearsal processes of contemporary theatre artists and gauge the value to the student's own practice.

Learning outcomes:

On successful completion of this module students will be able to:

- Identify the principal approaches and debating points of contemporary theatre
- Analyse the formal dimensions to contemporary theatre
- Interrogate the working methods of a range of professional theatre practitioners

Working method:

The course will be taught by seminar. Students respond to play scripts, transcripts of theatre performances, recordings, interviews with theatre artists and theoretical writings related to theatre and contemporary points of debate. Students also offer reflections on productions attended. It requires that students submit journal entries, research, presentations and assignments.

Assessment:

A reflective journal, a portfolio comprising assignments and presentations, and essays (to a total of 6000 words).

Reading List:

Students will be assigned reading and recordings relevant to the productions scheduled in the theatre, including play texts, journal articles, newspapers and periodicals.

3.2 MODULE 2: DRAMATURGY FOR THEATRE DIRECTING

Module Code: LR7010

Module Coordinator: Loughlin Deegan

Teaching staff: Karin McCully

Term: 1 & 2

Average Teaching Hours: 3 hours per week

Aims:

This module will be taught over 2 terms (Terms One and Two) by a professional dramaturg. It aims to introduce students to a range of dramatic texts with an emphasis on their composition. An understanding of the contexts within which different dramaturgical strategies were produced will also be fostered. This seminar based module requires students to examine key issues related to the creation and structure of plays. Through close readings, students will consider a variety of theories regarding dramatic structure, style and form, explore different approaches to textual analysis and learn to apply a critical vocabulary to a number of case studies. Dramaturgy is a compulsory module for playwriting and directing students and an elective module for design students.

Learning outcomes:

On successful completion of this module students will be able to:

- Demonstrate knowledge of a range of dramatic texts from Western theatre history
- Undertake research from a dramaturgical perspective
- Analyse texts from a dramaturgical perspective
- Demonstrate knowledge of the relationship between writing and its performance
- Reflect on one's own creative writing process from a dramaturgical perspective
- Demonstrate a solid overview of Western theatre history to provide a context for their own development as a theatre practitioner

Working method:

Classes will be in the form of weekly three hour seminars shared with the directors, playwrights, and those designers who elect to take the module. Students will be asked to make brief presentations to the class on chosen plays' style, context, structure, ideas and themes, and to put questions to the seminar to lead the debate on their assigned text. The plays assigned each week are then compared in light of the seminar's accumulative discoveries.

Assessment:

A series of written assignments as follows: Term One Essay (2000 words) (30%), Term Two Essay (2000 words) (30%), class presentations including submission of two written-up presentations (2000-3000 words approximately) (25%), continuous assessment (15%).

3.3 MODULE 3: THEATRE SKILLS

NOTE: This Module is not being offered in 2022/23

Module Code: LR7011

Module Coordinator: Loughlin Deegan and Annabelle Comyn

Teaching staff: tbc

Term: 1 & 2

Average Teaching Hours: 6 hours per week

Aims:

The overall aim of this elective module is to equip students with the skills of the practitioners of theatre other than the theatre director; with a view to the students being proficient in and conversant with the creativity of others, and further to enhance the craft of the student director by broadening their experience of making theatre. This module will explore the crafts of the actor, designer, stage manager, production manager, and stage technician through workshops with professionals in the various disciplines. Students will have tutorials with a professional directing tutor on The Lir staff throughout the module and will be required to maintain a journal documenting, processing and evaluating the experience.

Learning outcomes:

On successful completion of this module students will be able to:

- Appraise the creative processes of practitioners other than the theatre director
- Evaluate dramatic material from an acting, design, management and technical perspective
- Communicate effectively with the practitioners of other theatre disciplines
- Respond to and process criticism positively
- Reflect on the learning experience from cognate theatre disciplines

Working Methods:

This module will be taught over terms one and two in a series of workshops by professional theatre makers and teachers at The Lir. It aims to develop the student's directing skills through an exploration of the skills of practitioners in cognate theatre disciplines. Students will present their own work in each of the cognate disciplines throughout the module. In addition students will maintain a weekly journal of reflective practice in which they will analyse their process. Student's progress through the module will be supported by tutorials with a professional director.

Assessment:

Practical assessments in 4 cognate theatre disciplines (2 per semester), chosen in conjunction with the module co-ordinator (70%); journal of reflective practice (30%)

3.4 MODULE 4: DIRECTING WORKSHOP

Module Code: LR7012

Module Coordinator: Loughlin Deegan and Annabelle Comyn

Teaching staff: Annabelle Comyn & Louise Lowe

Term: 1 & 2

Average Teaching Hours: Terms 1 & 2: 6-8 hours per week.

Aims:

The overall aim of this compulsory module is to prepare students to direct a play in Module 5. Students will explore their directing processes in a workshop format, and will receive both group feedback and individual tuition in the development of their craft. The module

includes: workshops in text and a creative world-view; developing an awareness of the professional directing context; developing an explicit, personal aesthetic. This module also outlines career development and group or self critique; it introduces research skills and rehearsal etiquette by working in a professional environment.

Learning outcomes:

On successful completion of this module students will be able to:

- Interpret in dramatic form a creative world-view
- Direct scenes from a range of dramatic material
- Apply the principal directing methodologies of contemporary western theatre
- Respond to and process criticism positively
- Incorporate research in directing process

Working methods:

This module will be taught over terms one and two in a series of workshops led by professional directors. It aims to develop the student's directing skills through weekly workshops exploring structure, plot, space, character, stage world and actioning. In a further session each week students will present their own work for discussion and critique. The module will be supplemented by a series of skills classes including classes in movement and design. In addition students will maintain a weekly journal of reflective practice in which they will analyse their process.

Rehearsal space can be booked in The Lir through the Administration Office

Assessment:

Two practical assessments (at the end of Terms One & Two) (40%); on-going practical assessments based on presentations and critiques (40%), reflective journal (20%)

3.5 MODULE 5: THEATRE PRODUCTION

Module Code: LR7013

Module Coordinator: Loughlin Deegan and Annabelle Comyn

Teaching staff: Annabelle Comyn

Term: 3 and the summer months

Average Teaching Hours: Individual tuition on an on-going basis in response to work completed.

Aims:

The aim of this compulsory module is to enable students to apply the skills acquired in the other Modules to the development of their individual creative voice and practice, and in the direction of a theatre performance of between 60-90 minutes. Students will also extend their understanding of theatre production by completing two placements assisting professional theatre directors on productions. A further focus on professional development will assist the students to prepare for a professional career

Learning outcomes:

On successful completion of this module students will be able to:

- Undertake research from a director's perspective
- Direct a theatre production to a professional standard
- Appraise the creative process of theatre production
- Respond to and process criticism positively communicate effectively with other theatre professionals (actors, designers, technicians)
- Manage a production schedule and budget

Working methods:

This module will be taught over the summer months through individual supervision of students' rehearsal for and direction of a play of between 60-90 minutes' duration for public viewing in one of The Lir studios. The module is designed to bridge the gap between training and the theatre and related industries. Students will be required to keep a reflective journal. In term three and over the summer months students will also undertake two six-week placements with professional directors, supervised by the directing tutor. Students will be encouraged to keep a journal of reflective practice, throughout the placements and productions, which may form part of the assessment outlined below. A series of professional development talks, seminars and classes will complete the module.

Assessment:

Theatre Production of between 0-90 minutes' duration (80%); reflective journal and placements (20%)

4. STRATEGIES FOR MONITORING STUDENT PROGRESS

4.1 Student Progress Meetings

Student Progress Meetings take place at least once per term when the teaching team meet collectively to discuss an overview of each student's development. Student Overview Meetings are monitored primarily by Director of The Lir. Teachers on the MFA course also meet regularly to consider matters of student progress.

4.2 Tutorials/Feedback

Tutorials are designed to afford each student the opportunity to discuss their progress and receive guidance. Feedback is offered by teachers and staff on specific areas of work. Students receive tutorials from teachers and staff at strategic points in the year.

4.3 Student Journals

Students are encouraged to maintain a journal of their time on the course. This is an opportunity for reflection on daily and weekly work in classes and seminars, and is meant to be a personal record of the student's learning experience. Journals may form part of the assessment of a student's grade.

4.4 Oral Examinations

If deemed necessary or appropriate, oral examinations consist of two prepared topics based on the curriculum. Students are then interviewed on their chosen topics for 20 minutes by two members of the Course Committee.

4.5 Assessment

Assessment is the process by which formal judgments are made on standards of work. At The Lir, it is also used as a strong aid to guiding students on their progress. Information on how each class is assessed is included in Curriculum above.

5. ECTS

All university course modules in the European Union have an ECTS value. ECTS stands for European Credit Transfer System. The credit value is based on the number of weeks of each module, and the number of hours of scheduled taught classes and expected student input for assignments. The ECTS value for the modules of the degree are as follows:

Core Module: Contemporary Theatre Practice (20 ECTS)

Elective Module: Dramaturgy for Theatre Directing (20 ECTS)

Elective Module: Theatre Skills (20 ECTS)

Core Module: Directing Working Workshop (20 ECTS)

Core Module: Theatre Production (30 ECTS)

TOTAL (with one elective module): 90 ECTS

6. GRADES

6.1 Grades and Assessments

Although final degrees will not be graded, student's assessments will be marked to give them an indication of their progress.

Grade descriptors for Module 1 - 4 of the MFA Theatre Directing strand are as follows:

85-100: Work of exceptional merit, demonstrating an original creative vision, fluency of expression and breadth of reference far in excess of what is expected for a one-year higher research degree.

75-85: Work of outstanding merit which shows insight, profundity, and creative invention, characterised by involvement with subject matter, breadth of appropriate reference, and both conceptual and stylistic ability. In oral presentation, a combination of the above with a finely judged ability to structure material and communicate it in an oral context.

70-74: Work of similar standard to the above category but not to the same degree or level of consistency.

60-69: Very good work characterised by coherence and relevance, soundness of argument, appropriateness of reference, depth of background knowledge and discrimination. Some qualities of first-class work may be in evidence but the difference will be in degree of realisation.

50-59: Consistently solid work reflecting honest application and satisfactory achievement without ever fully attaining the creative invention associated with the higher grades. The work may be characterised by an over-reliance on secondary sources at the expense of personal involvement, confining itself to a limited or predictable line of argument with a tendency to description. It may contain sophisticated elements but be unable to integrate these into a complex but coherent argument. On the other hand, it may be characterised by a lack of full engagement with the material, a lack of breadth of critical reference or of sufficient theoretical thrust.

Pass Mark: 50

40-49: Work which demonstrates some background knowledge and research but no consistent or rigorous investigation; argument remains at a basic level, without sufficient analysis to achieve insight or coherence; repetitiveness, excessive reliance on secondary sources, imprecise expression or descriptive generalisation. Work of this grade is not considered sufficient for a postgraduate degree.

1-39: Failure to demonstrate most of the standards set out above.

Grade descriptors for Module 5 (Theatre Production) are as follows:

70% or above: imaginative practice achieving an exceptional level of creativity to a professional standard.

60% or above: creative practice with an achievement that demonstrates a very good level of understanding of the requirements of theatre directing (including structure, character, image, stage world, lighting and sound signification, and action). Students at the higher end of this marking band may display elements of the requirements of the higher band but not to the same level or degree of professional achievement.

50% or above: creative practice with an achievement that demonstrates a satisfactory understanding of the mechanics of theatre directing (including structure, character, image, stage world, lighting and sound signification, and action) but to a level that could not be considered adequate for professional production.

49% or below (FAIL): a level of achievement that fails to demonstrate a satisfactory understanding of the mechanics of theatre directing (including structure, character, image, stage world, lighting and sound signification, and action).

6.2 Weighting

Assessments for the Modules 1, 2, 3 and 4 are weighted equally at 20% each (2 compulsory modules and one elective module: total 60%), and the Theatre Production (Module 5) is weighted at 40%.

6.3 Overall Assessment and Progression

The pass mark for all assignments, including the Theatre Production module, is 50%.

Students must achieve an overall credit-weighted average mark of 50% or higher across the taught modules, and must pass all individual taught modules, in order to proceed to the Theatre Production module.

Students who fail a taught module and who are not eligible to proceed to the Theatre Production module are entitled to re-submit failed assignments in the module to be considered for the award of Postgraduate Diploma in the appropriate strand. Re-submission of failed assignments for the award of Postgraduate Diploma is normally due on August 31st or if this falls on a weekend, the Friday before. A supplemental assignment can only be awarded a maximum mark of 50%.

6.4: Awarding of Degrees:

Students who have successfully passed the three taught modules and accumulated 60 credits but do not wish to proceed to the Theatre Production module, or if they have attempted but failed this module, will be eligible for a Postgraduate Diploma. Students who, in addition, have achieved an overall average mark of at least 70% across the three taught modules will be eligible for the award of Postgraduate Diploma with Distinction. A Distinction cannot be awarded if a candidate has failed any assignment during the period of study.

Students who have achieved a mark of at least 50% in each module taken and accumulated 90 credits will be eligible for the award of Master in Fine Arts.

Students who, in addition, achieve a mark of 70% or above in the Theatre Production module and have an overall average mark for the course of at least 70% will be awarded the M.F.A. with Distinction.

The Master in Fine Arts cannot be awarded with Distinction if a candidate has failed **any** assignment in any module during their duration of study.

6.5 Late Submission, non-submission and Penalties

It is expected that assignments and set work will be submitted in full and on time. Submission dates will be communicated to students with sufficient notice to allow for arrangements to be made to ensure the submission deadline can be met. Written assignments must be submitted through TurnItIn.com which will assess for plagiarism. Full submission details will be communicated to you via the administration office early in term 1. The online submission deadline will ordinarily be 12 noon on the date of submission, unless otherwise communicated. In the event of late submissions the following penalties will apply:

- Submissions received up to one week late (7 days) will receive a penalty of 10%
- Submissions received up to two weeks late (14 days) will receive a penalty of 20%
- Submissions received after two weeks, or not received after this time, will receive a grade of zero and be recorded as a fail.

Students who fail or fail to submit a particular assignment will be offered one (1) supplemental (re-sit) assignment, which will be assigned by the module leader. Grades for supplemental assignments will be capped at 50%.

6.6 Extensions and Extenuating Circumstances

Extensions may be requested in writing in advance directly to the administration office. They should include relevant supporting documentation e.g. medical certification, as necessary. The maximum extension that can be granted is one day (24 hours).

Similarly, a student may apply directly to the administration office in writing for consideration of extenuating circumstances in the event that they miss a deadline due to unforeseen circumstances. These should also include relevant supporting documentation. Such applications may be considered by one or all of the Course Leader, Academy Director and Academic Director as necessary and will not be decided by the module leader. Applications for extenuating circumstances will be considered sympathetically and treated with the strictest confidence.

7. STYLE REQUIREMENTS FOR WRITTEN SUBMISSIONS

7.1 Style Requirements:

Please consult the MLA or Chicago academic writing style requirements.

Full access to the Chicago Manual of Style online is available via the TCD Library website. Alternatively, please see:

Chicago Manual of Style, 15th edition, Chicago: Chicago University Press, 2003. You may also consult the Chicago style requirements at:

http://www.chicagomanualofstyle.org/tools_citationguide.html

For details of the MLA please see:

Gibaldi, Joseph, MLA Style Manual and Guide to Scholarly Publishing, 2d Edition, New York, MLA, 1998.

You may also consult the MLA style requirements at:

<http://owl.english.purdue.edu/owl/resource/557/01/>

Please remember to always quote accurately, to be consistent in your style and referencing and to pay attention to detail. Proof read your essays carefully before submitting it in order to eliminate spelling and typing errors, misquotation and unsatisfactory presentation.

Please note that all course work elements have deadlines. If you wish to apply for an extension you must consult with the relevant teacher and if an extension is agreed then please ensure that all supporting documentation is attached to your final submission.

7.2 Acknowledgements and Footnotes:

(1) Students should always acknowledge their sources:

Students should remember that plagiarism is a serious offence and will result in disciplinary procedures.

Plagiarism is the presentation of another person's thoughts or words as though they were a student's own. Direct quotations from the published or unpublished work of others must always be clearly identified by being placed in quotation marks, and a full reference to the source must be provided in the manner outlined below. Equally, if a student summarises

another person's ideas or judgements, they must refer to that person in their text, and include the work referred to in their notes and bibliography. Any instance of plagiarism within an essay, examination or dissertation will render the work invalid for examination and assessment purposes and it will be reported to the Junior Dean of the College.

If a whole section of a student's work is based on data provided by a single source, they should make a general acknowledgement in the text of their essay, as follows:

'This section on directing *The Life of Galileo* is based on the account of the National Theatre production in Jim Hiley, *Theatre at Work*, London, 1981.'

Note, however, that such a blanket statement does not give the student the right to plagiarise the source.

7.3 Trinity Policy on Plagiarism:

Plagiarism is interpreted by the University as the act of presenting the work of others as one's own work, without acknowledgement.

Plagiarism is considered as academically fraudulent, and an offence against University discipline. The University considers plagiarism to be a major offence, and subject to the disciplinary procedures of the University.

Plagiarism can arise from deliberate actions and also through careless thinking and/or methodology. The offence lies not in the attitude or intention of the perpetrator, but in the action and in its consequences.

Plagiarism can arise from actions such as:

- a) copying another student's work
- b) enlisting another person or persons to complete an assignment on the student's behalf
- c) quoting directly, without acknowledgement, from books, articles or other sources, either in printed, recorded or electronic format
- d) paraphrasing, without acknowledgement, the writings of other authors

Examples c) and d) in particular can arise through careless thinking and/or methodology where students:

- (i) fail to distinguish between their own ideas and those of others

- (ii) fail to take proper notes during preliminary research and therefore lose track of the sources from which the notes were drawn
- (iii) fail to distinguish between information which needs no acknowledgement because it is firmly in the public domain, and information which might be widely known, but which nevertheless requires some sort of acknowledgement
- (iv) come across a distinctive methodology or idea and fail to record its source.

All the above serve only as examples and are not exhaustive.

Students should submit work done in co-operation with other students only when it is done with the full knowledge and permission of the lecturer concerned. Without this, work submitted which is the product of collusion with other students may be considered to be plagiarism.

When work is submitted as the result of a Group Project, it is the responsibility of all students in the Group to ensure, in so far as possible, that no work submitted by the Group is plagiarised.

It is clearly understood that all members of the academic community use and build on the work of others. It is commonly accepted also, however, that we build on the work of others in an open and explicit manner, and with due acknowledgement. Many cases of plagiarism that arise could be avoided by following some simple guidelines:

- a) any material used in a piece of work, of any form, that is not the original thought of the author should be fully referenced in the work and attributed to its source. The material should either be quoted directly or paraphrased. Either way, an explicit citation of the work referred to should be provided, in the text, in a footnote, or both. Not to do so is to commit plagiarism
- b) when taking notes from any source it is very important to record the precise words or ideas that are being used and their precise sources
- c) while the Internet often offers a wider range of possibilities for researching particular themes, it also requires particular attention to be paid to the distinction between one's own work and the work of others. Particular care should be taken to keep track of the source of the electronic information obtained from the Internet or other electronic sources and ensure that it is explicitly and correctly acknowledged

4. It is the responsibility of the author of any work to ensure that they do not commit plagiarism.

Students should ensure the integrity of their work by seeking advice from their Lecturers, Course Co-ordinator, Director or Supervisor on avoiding plagiarism. All Schools should include, in their handbooks or other literature given to students, advice on the appropriate methodology for the kind of work that students will be expected to undertake.

If plagiarism as referred to in paragraph (2) above is suspected, the Director of Teaching and Learning (Postgraduate) will arrange an informal meeting with the student, the student's Supervisor or other appropriate representative, and the academic staff member concerned, to put their suspicions to the student and give the student the opportunity to respond.

If the Director of Teaching and Learning (Postgraduate) forms the view that plagiarism has taken place, they must decide if the offence can be dealt with under the summary procedure set out below. In order for this summary procedure to be followed, all parties noted above must be in agreement. If the facts of the case are in dispute, or if the Director of Teaching and Learning (Postgraduate) feels that the penalties provided for under the summary procedure below are inappropriate given the circumstances of the case, they will refer the case directly to the Junior Dean, who will interview the student and may implement the procedures set out in Section 5 (Other General Regulations).

If the offence can be dealt with under the summary procedure, the Director of Teaching and Learning (Postgraduate) will recommend to the Dean of Graduate Studies one of the following penalties:

- a) that the piece of work in question receives a reduced mark, or a mark of zero; or
- b) if satisfactory completion of the piece of work is deemed essential for the student to rise with his/her year or to proceed to the award of a degree, the student may be required to re-submit the work. However, the student may not receive more than the minimum pass mark applicable to the piece of work on satisfactory re-submission.

Provided that the appropriate procedure has been followed and all parties above are in agreement with the proposed penalty, the Dean of Graduate Studies may approve the penalty and notify the Junior Dean accordingly. The Junior Dean may nevertheless implement the procedures set out in Section 5 (Other General Regulations).

All students must read the section in the University Calendar pertaining to plagiarism which is to be found here: <http://www.tcd.ie/calendar/>

All students must complete the online tutorial on avoiding plagiarism 'Ready, Steady, Write', located at <http://tcd-ie.libguides.com/plagiarism/ready-steady-write> before submitting any written material for assessment.

The weblink to the Library Repository on plagiarism can be found here:

<http://tcd-ie.libguides.com/plagiarism>

8. HOW TO SUBMIT WRITTEN WORK

Students are required to submit their assigned essays, projects, and other assessed work by 12 noon on the appointed date. The work should be submitted in two forms; online via www.turnitin.com and in hard copy to the Administration Office (during the advertised office hours) accompanied by an Essay Cover Sheet attached. These cover sheets will be emailed to each student in advance of the first assignment due. Until receipt of the essay has been confirmed by the Administration Office, submission requirements will not be considered as having been met.

Work that cannot be submitted online (video cassettes, portfolios, large logbooks, etc.) must be hand delivered to the Administration Office during posted office hours prior to the deadline. A log will be maintained of work so submitted.

Students are advised that they are required to keep a copy of all work submitted. The Lir will exercise extreme care in collecting and receipting assessment materials, but if any materials go astray it will be the student's responsibility to provide a copy replacing it. Within a week of the due date, a list of students whose work has not yet been received will be posted on the MFA notice board.

When submitting written work, students must include the following statements on their submission sheet:

I have read and I understand the plagiarism provisions in the General Regulations of the University Calendar for the current year, found at:

<http://www.tcd.ie/calendar>

I have also completed the Online Tutorial on avoiding plagiarism 'Ready, Steady, Write', located at <http://tcd-ie.libguides.com/plagiarism/ready-steady-write>

9. IMPORTANT SAFETY ISSUES FOR STUDENTS

9.1 Security

Students should ensure that all valuables are kept with them at all times - this includes notebooks, logbooks and written assignments, as these are often irreplaceable. Please note that lockers are not immune from theft. Students should take care to close and lock any windows or doors after they have finished using a space. This is particularly important with regards to back and front entrance to the building.

Bicycles are equally vulnerable and should be securely locked to the stands provided by The Lir. No bicycles are allowed inside the building, nor may they be chained to the railings at the entrance to The Lir. Any unauthorised bicycles found illegally parked will be clamped and a €10 fee will be incurred for their release.

For security reasons, The Lir will be locked by security from 10pm each evening. Students must have vacated the building by this time so as not to set off the alarm. There is no access for students after that time, unless accompanied by a member of staff. At weekends The Lir will be accessible from 10am-6pm only to rehearse or prepare for class. When a public performance is taking place in the theatre, only students directly involved with the production are allowed in the Academy after 10pm. Strangers are permitted in the building as far as the administrative office only. Any stranger found in the building should be directed to the administrative office or to a member of staff.

9.2 Fire Safety Procedures:

Students must sign in every morning before class in the Administration Office.

In the event of an emergency, students must follow the directions of The Lir staff, to vacate the building in an orderly manner, to go directly to the designated Assembly Point and not to return to the building until it is deemed safe to do so by the Fire Brigade or the appointed Lir Fire Officer.

Emergency Exits must be kept clear at all times.

Items placed in Emergency Exits must be reported directly to The Academic Administrator between the hours of 9am-5pm and to the Front of House Manager thereafter.

Students will undertake an annual fire evacuation drill in the first weeks each new year.

9.3 Working with Equipment

All technical work in The Lir Studios and Workshop must be supervised and/or authorised by a member of staff, and safety guidelines must be observed at all times when working with technical equipment.

9.4 Health and Safety

The Lir operates a detailed Health & Safety Policy to which students are required to adhere.

First Aid equipment and staff trained as occupational first-aiders shall be provided by The Lir. First Aid Kits are available from the Administration Office on the first floor and at the cafe area on the ground floor.

9.5 Housekeeping

It is important that students leave spaces clean and tidy for the next class or rehearsal. Chairs should be stacked at the end of each class and placed against the wall, unless otherwise arranged by the teacher. Please ensure that all rubbish is placed in the rubbish- bins provided. This is particularly important in both the café/foyer and Studios as these are the public areas of The Lir and should be ready for visitors at all times.

10. DATA PROTECTION

The Lir, in association with Trinity College, is required to process relevant personal data regarding students and staff as part of its operation. It endeavours to ensure that this is done in compliance with all relevant Data Protection legislation.

Therefore, you will be required to sign a 'Permission to Disclose Information' form, which can be found at the back of this handbook. All signed forms should be handed into The Administration Office.

11. CODES OF PRACTICE

The Lir's Codes of Practice are aimed at encouraging and developing a shared sense of responsibility in students – this includes a responsibility for oneself, one's fellow students, and the work environment.

11.1 Punctuality and Attendance

Students are required to be present and on time for all classes and call times. They should aim to arrive well in advance of the time classes and call times are due to commence, and should arrive no later than five minutes before the official starting time.

11.2 Illness or Other Absence

Students are expected to attend all timetabled classes and workshops. Students are asked to inform The Academic Administrator via reception on 01-896 2559 if they are unable to attend classes or rehearsals due to illness or any other reason.

11.3 Student Housekeeping

Students have an express obligation toward the upkeep and maintenance of all the Lir spaces, including rehearsal rooms, classrooms, theatres, dressing rooms and communal areas.

11.4 General Upkeep of Rehearsal Rooms, Studios and all Classroom Spaces

The main classroom spaces of The Lir are Rehearsal Rooms 1-6, Studio 1 and Studio 2 (outside of production times), the Dance Studio and Seminar Room. These rooms are in constant use by a large number of different groups each day and students must assist in keeping these rooms in good order to ensure the smooth running of the building.

At the end of each and every class students should **stack all chairs against one wall and move any tables or other furniture to one side**, leaving the space clear, clean and in a good state of readiness for the next group of room users.

All rubbish should be placed in bins and all personal items and paperwork removed from the room. Anything inadvertently left behind should be placed in lost property containers. See note on lost property below.

Class tutors should leave time at the end of classes to allow for this tidy up, and class-reps and vice-reps should ensure it is being carried out by their year groups on an ongoing basis.

Each classroom space should have 20 stacking chairs, a table and waste bins provided. Rolling whiteboards are also provided in Rehearsal Room 1, Studio 2 and Rehearsal Room 3, whilst the Dance Studio should contain only dance mats, and no furniture.

In order to maintain the default room set up, please **avoid moving classroom furniture about the building**. Any furniture that is moved as part of a class must be replaced immediately afterwards.

Nothing may be stored in classrooms or studios without advance permission from venue or technical staff. In particular props, furniture or costumes that may be in use for classes must be returned to storage on a daily basis.

Additionally furniture or bins must not be removed from classrooms and left in the corridors outside. Neither may shoes, bags or clothing be left in corridors outside classes.

All corridors in the building are fire escape routes, and must be kept completely clear at all times.

11.5 Personal Property and Storage:

Your personal property (including clothing, footwear, bags and paperwork) must not be left lying around the academy, either in classrooms, shared spaces or on the corridors.

Student locker areas and the student cloakroom are available for storage of your personal belongings. Please do not allow your property to accumulate in the academy throughout term – bring in only what you need for classes, and take your belongings home on a regular basis.

Storage areas are very busy and have limited space, and they must be kept in good order.

For reasons of fire safety, absolutely **nothing may be placed on top of lockers and nothing is to be left on the floor** of the cloakroom or locker areas. Items left on the floor or on top of lockers are liable to be disposed of at any time.

Coats, bags, towels and other items should be hung up on coat hooks whilst shoes, extra clothing and any valuable personal belongings should be kept in your locker.

Paperwork, journals and books may be stored in the Resource Room in the green crates provided.

Yoga mats must be stored on the top shelves in the cloakroom only.

Please avoid keeping perishable foodstuffs in your locker or on the cloakroom shelves – these belong only in the Green Room.

You will receive a notification in advance asking you to empty your locker and clear your personal belongings from the student storage areas on the **last day of each term**.

The academy is used for many events and short courses outside of term time and so it is essential that storage areas are cleared in a timely fashion at each term end. All items left behind in these areas after end of term will be immediately disposed of or donated to charity.

11.6 Lost Property

Any clothing or personal items left behind in classrooms or studios during term time should be placed into the lost property containers, which are provided in Rehearsal Rooms 1-6, Dance Studio, Resource Room and Green Room. Valuable items, i.e. jewellery, phones, wallets etc. should be dropped to the Administration office. Academic paperwork, books and journals (which may be of very high personal value to an individual student), should ideally be dropped to the lost property box on the shelves of the Resource Room which is designated for this purpose. Lost property containers will be emptied up to twice per term, and the contents disposed of or donated to charity.

11.7 Food and Drink

All food and hot drinks may be consumed in the Green Room or the Café area in the Front Foyer only. With the exception of bottled water, students are not allowed to eat or drink in any of The Lir's classrooms, studios, rehearsal rooms or workspaces. This includes, but is not limited to, Rehearsal Rooms 1-6, Studio 1 and Studio 2, Dance Studio, Seminar Room, Resource Room, Dressing Rooms, Wardrobe, Construction and Scenic Workshops.

Bottles of water may be brought into classes and workspaces.

Water fountains are located outside Rehearsal Room 1 and Studio

The chewing of gum is not permitted in any class.

11.8 Green Room and Café/Front Foyer

Students may use the cafe area situated in the front foyer of The Lir or the Green Room for meal breaks. Students using these areas to eat and drink must clear up after themselves immediately after use. As both areas are used by a large number of people each day it is essential that students take responsibility for keeping them in good order.

A weekly rota system for student upkeep of the green room and café area is to be operated in term time. Each week in term a different student year group takes responsibility for inspecting the green room and front foyer for cleanliness at end of lunchtime and at end of classes each day, and rectifying any major issues. Rotas will be posted on class notice boards, and class reps will oversee the implementation of this system.

Please note that the rota system does not in any way reduce the onus on individual students to clear up after themselves. Where the relevant year group on duty observe any ongoing problems with housekeeping, these should be reported to venue staff by that group's class rep.

Use of the Café/Front Foyer:

The cafe area in the front foyer is a public facing area and must be kept presentable at all times.

All rubbish must be placed in the bins provided. Personal items such as cups and bowls must not be left in the cafe area. Kitchen facilities are provided in the Green Room to wash crockery items after use. Each student must take responsibility for their own items and any crockery/Tupperware left in the front foyer will be disposed of.

Please re-set foyer tables and chairs, clean up any spillages or food waste, and leave the area in good order after use. Furniture should not be removed from the front foyer without permission from a member of venue or technical staff.

11.9 Resource Room

The Resource Room is located on the first floor and is for use by all students.

The Resource Room is the student computer room and library space for the building.

It is a **quiet work space** where talking and other noise should be kept to minimum. Please respect your fellow students when working in the Resource Room, and avoid causing a distraction. Computer use should be prioritised for academic work only. Please log out of computers when you are finished using them.

No food or drink is to be brought into the Resource Room, with the exception of bottled water.

Green storage crates are available to students to store their paperwork, journals etc, on the

shelves in the Resource Room. Crates should be labelled with your name, year group and term, and may not be removed from the room. Only one crate per student please. Crates should be emptied at the **end of each term**.

The shelves in the Resource Room are for storage of library books and academic paperwork only. Absolutely no personal belongings such as food, clothing, bags, yoga mats etc. may be stored loose on the shelves of the Resource Room, or left on the windowsill or radiators. Any personal items left loose on the Resource Room shelves, windowsill or radiators are liable to be disposed of at any time.

11.10 Booking rehearsal space

MFA students requiring rehearsal space can book this through the Administration Office on the first floor during student hours or by emailing the Venue Manager at venuehire@thelir.ie. From time to time space may be unavailable at The Lir and on those occasions students are encouraged to acquire rehearsal space on the main TCD campus by contacting Enquiries@tcd.ie

11.11 Wardrobe and Costume Guidelines

MFA students requiring costumes for classes or projects are asked to contact the Wardrobe Supervisor Clodagh Deegan (clodagh.deegan@thelir.ie) at the beginning of each project or at the soonest available opportunity.

Important Costume Guidelines:

- Please note that final year productions take precedence on any and all costumes
- If costumes are soiled from use this must be brought to the costume supervisor's attention and left in the laundry.
- All dressing rooms, rehearsal rooms and studios are to be cleared of costumes after use.
- Any costumes or other items of clothing returned with costumes will be absorbed into the costume stock
- All costumes must be treated with respect and care particularly when being stored

11.12 Props Store Guidelines

MFA students requiring props for classes or projects are asked to contact the Head of Stage Management, Aisling Mooney (aisling.mooney@thelir.ie) at the beginning of each project or at the soonest available opportunity.

Further Important Prop Guidelines:

MFA (Theatre Directing)

- Please note that final year productions take precedence on any and all props
- No sharp implements are allowed to be used as rehearsal props at any time
- Use of flame or any potentially hazardous materials must be cleared in advance through a member of technical staff
- Props brought in by staff or students not from the props store must be removed after every class and stored in an appropriate place
- No external borrows for outside student shows.

11.13 Professional Courtesy

Both staff and students are responsible for the creation of a positive working atmosphere. It is important therefore that professional courtesy is maintained at all times in all classes and rehearsals.

11.14 Scripts and Photocopying

The Lir has one multi-function device located in the Student Resource Room, 1st floor.

The printing, scanning and photocopying facilities in The Lir Student Resource Room, Trinity Libraries and Trinity computer rooms are managed by IS Services and the College Library, and provided by Datapac. There are also multi-function devices (MFDs) in the College Libraries and College computer rooms located throughout the campus, and in some off campus locations.

Note that in order to be able to use this service you must first credit your print account. Please log on to the link below for details on how to set up and credit your print account:

<https://www.tcd.ie/Library/using-library/photocopying.php>

The Lir aims to limit the use of paper-in the Academy where possible, and we would ask students to only print out materials when it is absolutely necessary to do so. A scanner will also be provided for ease of sharing material between students by email.

Students are expected to familiarise themselves with all relevant copyright legislation and not to infringe the copyright of any author when photocopying material.

11.15 Mobile Phones/Social Networking/Recording Devices

We ask students to turn off all mobile phones before coming into class or rehearsals. No phone calls can be made during these periods. Phones should be turned on only when outside the studio or classroom. Individual tutors will communicate a policy on the use of kindles tablets or laptops in their classes. Students are asked not to photograph, record or video any classes or performances at The Lir, and not to share any such recordings online on any forum.

11.16 Food and Drink

With the exception of water and other drinks, students are asked not to eat or drink in any of the spaces they work in.

11.17 Cloakrooms and Lockers

Lockers and cloakroom facilities are provided to each student for the storage of their items needed for their day to day activities. Students are asked not to store personal clothing items for long periods of time. Locker areas and cloakroom facilities MUST be kept clear at all times as a matter of our Fire Evacuation Policy. Locker and cloakroom areas will be spot checked twice a week, mid week and every Friday. Should items be left lying around they will be discarded.

11.18 Press and Publicity

Any publicity relating to your attendance at The Lir will be at the discretion of the Director of The Lir.

11.19 No Smoking Policy

In keeping with Irish legislation regarding smoking in the workplace it is illegal to smoke anywhere in The Lir. Similarly, it is not permitted to vape indoors anywhere on The Lir campus.

The smoking areas for the students are situated at the back of the Lir, beside the entrance to The Tower and outside the construction workshop. Students must exit from the main entrance and walk around to the smoking areas. In the interest of safety and security it is not permissible to use fire escapes to access these areas.

11.20 Alcohol or Drug Abuse

Students are not allowed to drink alcohol anywhere in The Lir (except at authorised receptions or other public functions), or use drugs, and no student will be allowed into class or rehearsal while under the influence of alcohol or drugs (unless prescribed by a doctor). Any student drinking alcohol or using drugs on the premises will be liable to immediate disciplinary action.

11.21 Dignity & Respect

At The Lir Academy, we are committed to providing a safe and respectful work environment for all - whether an employee, a student, a contractor, a supplier, or a member of the public. No one has the right to harass or bully anyone else, at work or in any situation related to employment. The Lir has a comprehensive Bullying and Harassment policy in place, which is available from the Policies and Procedures section of The Lir's website. This policy outlines the steps that students can take if they are subject to harassment or bullying of any kind while studying at The Lir. The Lir's Bullying and Harassment Policy works within

the parameters of Trinity's over-arching Dignity & Respect Policy which can be accessed on tcd.ie.

11.22 Disruptive or Violent Behaviour

Students who offend or harm a member of staff or another student by means of violent acts (including verbal abuse such as swearing, shouting or screaming), or personal harassment (or behaviour likely to produce this effect), will be liable to immediate disciplinary action and dismissal from the course.

11.23 Sexual, Gender or Racial Harassment

Students should note that any kind of sexual, gender or racial harassment is unacceptable behaviour. In addition, all students have the right to determine their own gender identity and sexual orientation, free from any kind of prejudice or pressure. Any student who engages in sexual or racial harassment will be liable to immediate disciplinary action. In an intensive actor-training course, students are often called upon to take risks, which can take someone to limits of emotional or physical comfort. It is important for the student to know their boundaries - the place beyond which they will be compromised. It is the responsibility of fellow students and tutors to respect these limits; no student will ever be penalised for refusal to undertake an activity which they feel is dangerous—ethically, psychologically, or physically. The studio framework and exploratory nature of our classes should never be presumed to license behaviour which would otherwise be considered socially unacceptable.

11.24 Gender Equality

In 2018, in partnership with other leading theatre organisations The Lir published a detailed Gender Equality Policy which articulates The Academy's commitment to achieving Gender Equality across a whole range of the academy's activities from staff and student recruitment, to production choices and the composition of creative teams, sexual harassment and bullying protocols and the content of individual curricula. The document also outlines the strategies that The Lir will implement in order to ensure improvements are implemented where necessary. Students can access the Gender Equality Policy from the Policies and Procedures section of The Lir's website

11.25 Maintaining Good Health

Students are encouraged to remain conscious of their physical and mental wellbeing throughout the year and to seek assistance from Lir teachers and staff if they are encountering any particular problems.

Students should also avail of Trinity's medical and counselling services as often as they are needed.

Students are encouraged to eat healthily throughout the year, drink plenty of water during the college day and get sufficient sleep at night.

Students who have an underlying health issue or develop a health problem during their course are encouraged to bring it to the attention of the Academic Administrator as soon as possible. Personal information regarding health issues will only be shared with relevant teachers with the express permission of the student on completion of The Lir's Permission to Disclose Health Information form; an example of which is included in Appendix Two below. Students who are asked to complete the form will meet with the Director of The Lir in confidence to discuss the implications of each option and the best course of action for the student.

12. APPENDICES

12.1 Permission to disclose personal information form (MFATD)

STUDENT PERMISSION TO DISCLOSE PERSONAL INFORMATION FORM

Name of Student:

Course Title:

Course start date:(MM/YY) Course completion date..... (MM/YY)

The Lir acknowledges student's rights under data protection legislation and takes seriously its obligations to keep all personal information confidential. It may be necessary, however, to publish a student's name, image, likeness, agreed biography, images of their course or production work in The Lir publications, or in other formats or media at the discretion of the Director, for the following reasons:

- To fulfil the objectives of the Master in Fine Art Theatre Directing
- To promote The Lir students to industry
- To support students' future careers
- To promote The Lir
- To promote the courses offered by The Lir

I hereby agree to allow The Lir to use my name, image, likeness, agreed biography, images or video recordings of my work in workshops or Gradfest productions for the purposes outlined above

Student signature..... Date

Please note that this form complies fully with Data Protection legislation

12.2 Permission to disclose health information form

STUDENT PERMISSION TO DISCLOSE HEALTH INFORMATION FORM

This form is Part 1 of the Learning Agreement Form. Depending on your response, it will be either be:

Circulated to the appropriate members of staff at the discretion of the Director

OR

Retained in the student confidential file.

Name of Student:

Course Title:

Course start date:(MM/YY) Course completion date..... (MM/YY)

Condition / disability:

Nature of documentary evidence if appropriate - e.g. report from educational psychologist, medical report etc. (please attach)

Please complete one of the sections below:

A. I give my permission for appropriate members of The Lir staff to be made aware of my disability/condition so that appropriate help and support can be provided.

Student signature Date.....

B. I do not give my permission for staff The Lir to be made aware of my disability/condition and I understand that the full appropriate support may not be available to me.

Student signature..... Date

C. I agree to discuss my disability fully with the Director but will take responsibility for discussing the nature of my disability/ condition direct with teaching staff, so that appropriate help and support can be provided, if necessary

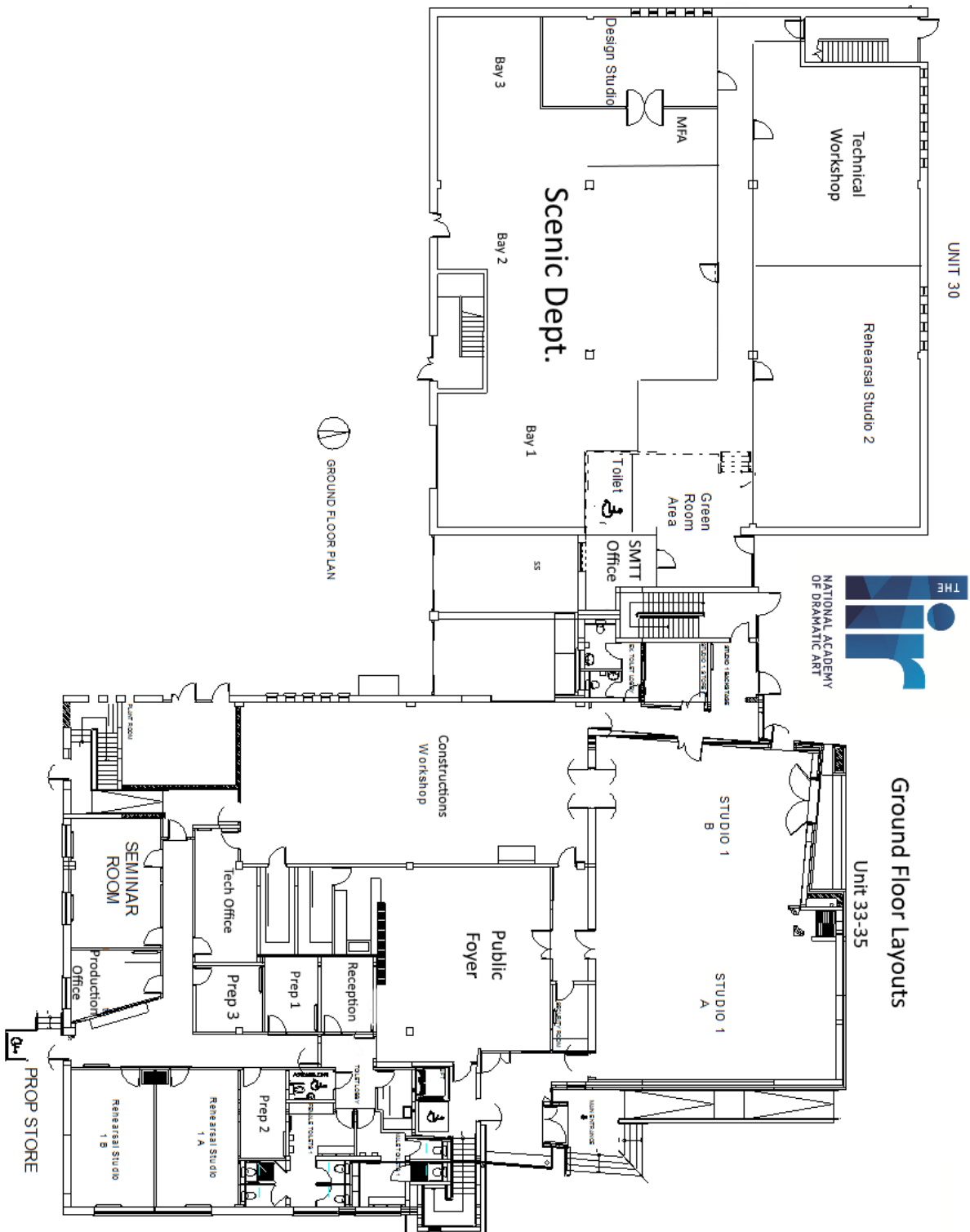
Student signature..... Date

Please note that this form complies fully with Data Protection legislation

12.3 Written Work Submission Form

<u>The Lir, National Academy of Dramatic Art</u>	
Essay/Logbook Cover Sheet	
Please fill out with block capitals/tick the appropriate boxes and attach to the front of your essay/logbook	
Name:	
Student Number:	
Email Address:	
<i>Please tick the course in which you are enrolled:</i> Foundation Diploma in Acting and Theatre Studies <input type="checkbox"/> Bachelor in Acting (Hons) <input type="checkbox"/> Bachelor in Stage Management and Technical Theatre <input type="checkbox"/> Master in Fine Art <input type="checkbox"/>	
For undergraduate courses please tick: Year 1 <input type="checkbox"/> Year 2 <input type="checkbox"/> Year 3 <input type="checkbox"/>	
For the MFA course, please tick your specialism: Playwriting <input type="checkbox"/> Directing <input type="checkbox"/> Stage Design <input type="checkbox"/> Lighting Design <input type="checkbox"/>	
Essay Title: <input type="checkbox"/>	
Course Tutor:	
Course Title:	
<i>Please tick which term this essay is for:</i> Term 1 <input type="checkbox"/> Term 2 <input type="checkbox"/> Term 3 <input type="checkbox"/>	
I also confirm that have read and I understand the plagiarism provisions in the General Regulations of the University Calendar for the current year, found at: http://www.tcd.ie/calendar	
I have also completed the Online Tutorial on avoiding plagiarism 'Ready, Steady, Write', located at http://tcd-ie.libguides.com/plagiarism/ready-steady-write	
Date of submission:	Signature:
<u>Please Note:</u> Essays must also be submitted electronically by the due date through www.turnitin.com	

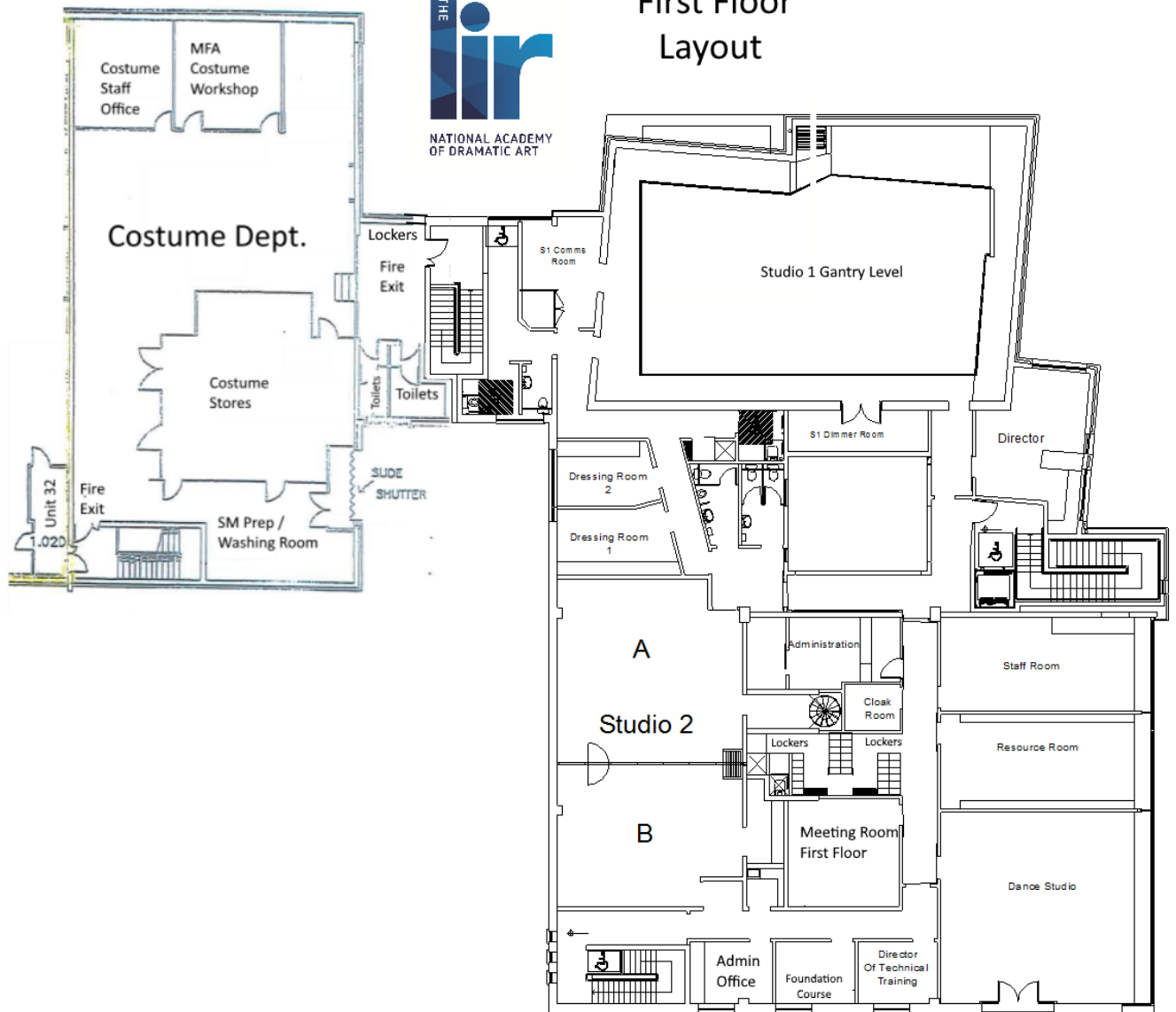
Building Maps



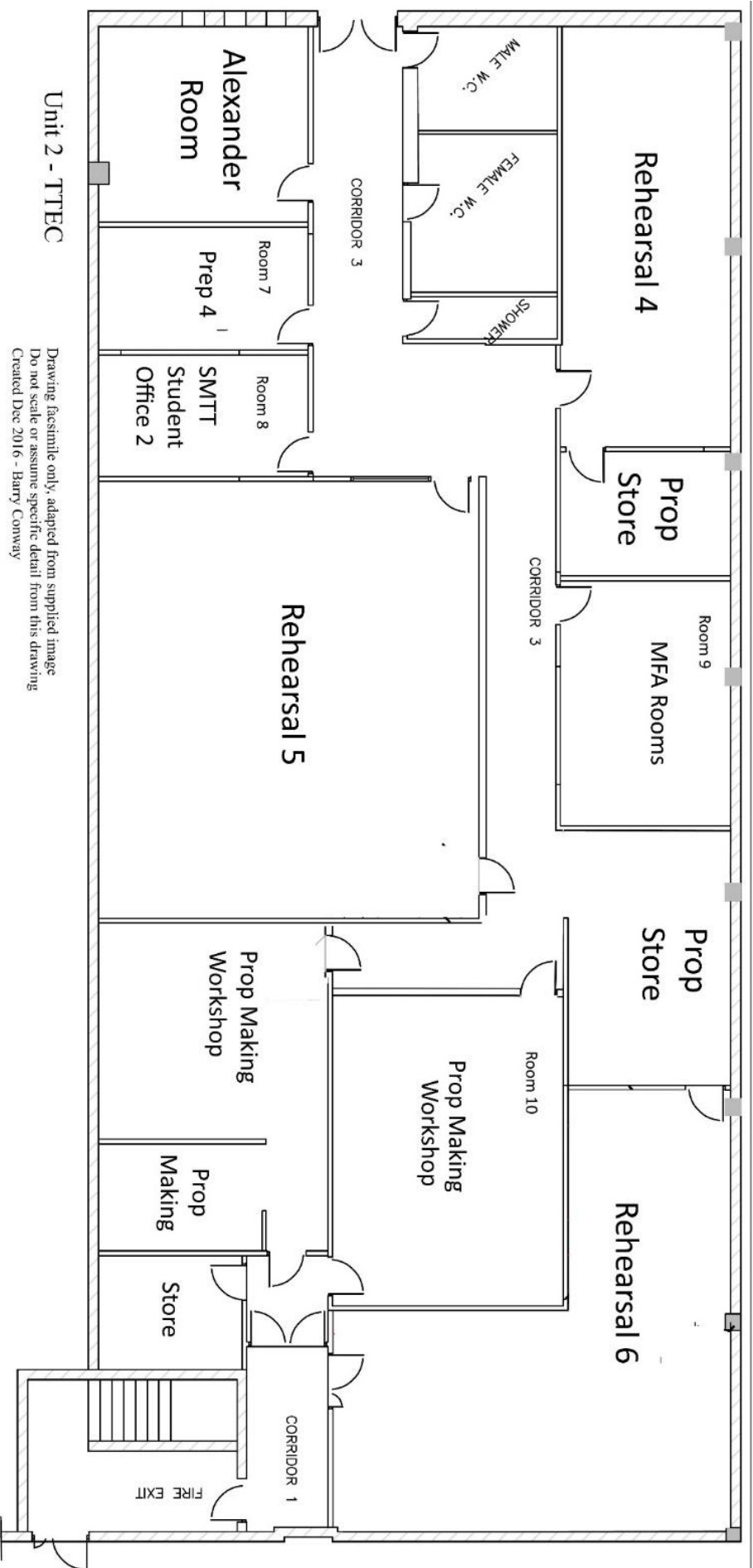
MFA (Theatre Directing)



First Floor Layout



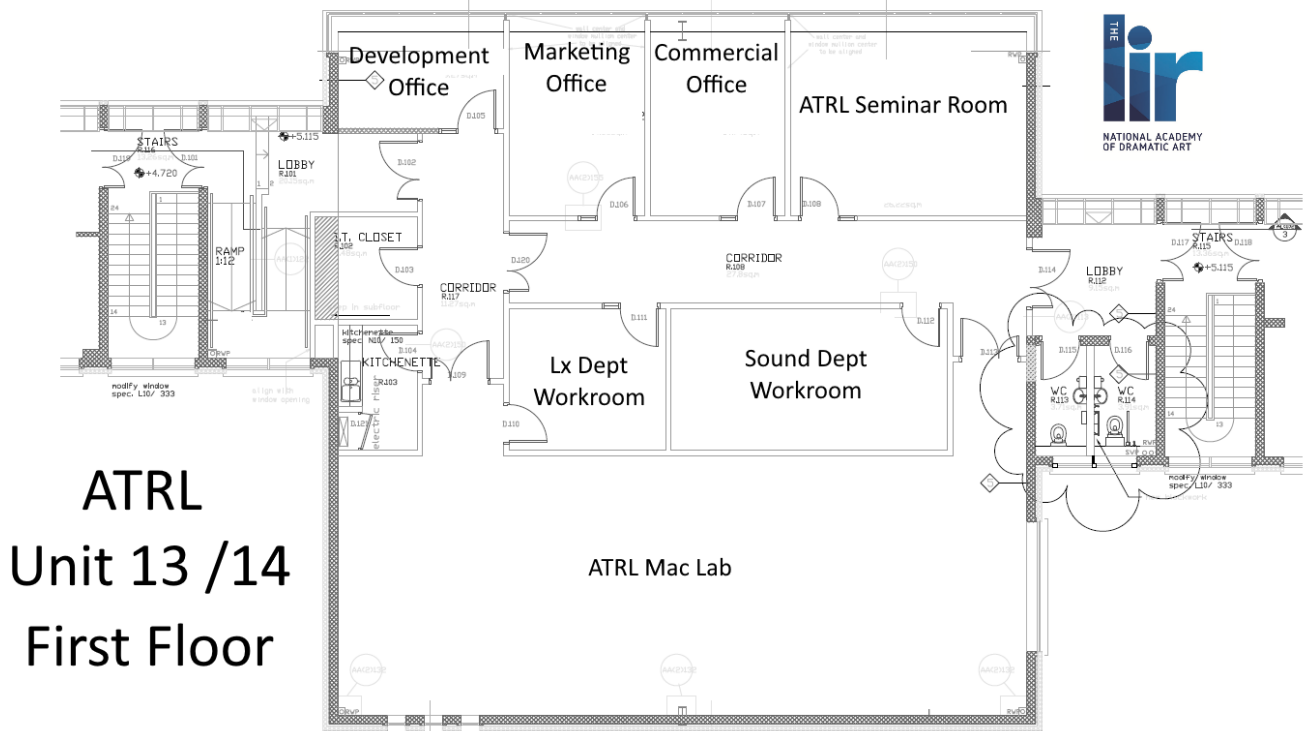
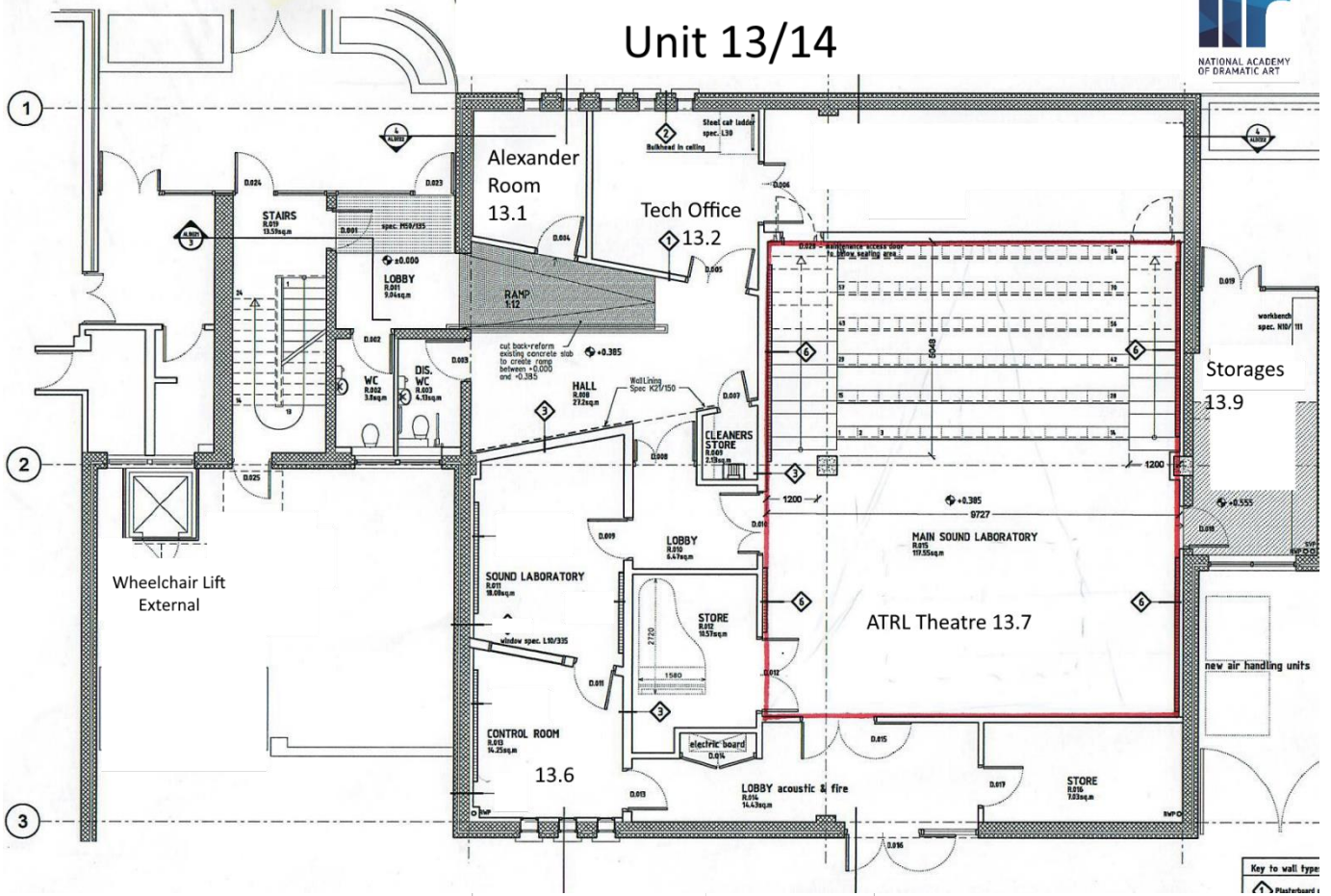
Unit 2 Layout



Unit 2 - TTTEC

Drawing facsimile only, adapted from supplied image
 Do not scale or assume specific detail from this drawing
 Created Dec 2016 - Barry Conway

ATRL Ground Floor Unit 13/14



ATRL Unit 13/14 First Floor